

UNITED STATES DEPARTMENT OF THE INTERIOR
NATIONAL PARK SERVICE

FOR NPS USE ONLY
RECEIVED
DATE ENTERED
DT 19

NATIONAL REGISTER OF HISTORIC PLACES
INVENTORY -- NOMINATION FORM

SEE INSTRUCTIONS IN HOW TO COMPLETE NATIONAL REGISTER FORMS
TYPE ALL ENTRIES -- COMPLETE APPLICABLE SECTIONS

1 NAME

HISTORIC Fort George Wright Historic District

AND/OR COMMON

2 LOCATION

STREET & NUMBER W 4000 Randolph Road

NOT FOR PUBLICATION

CITY TOWN Spokane

CONGRESSIONAL DISTRICT #5 - Thomas S. Foley

STATE Washington

X VICINITY OF CODE

COUNTY CODE

3 CLASSIFICATION

CATEGORY	OWNERSHIP	STATUS	PRESENT USE	
X DISTRICT	PUBLIC	X OCCUPIED	AGRICULTURE	MUSEUM
BUILDING(S)	PRIVATE	UNOCCUPIED	COMMERCIAL	PARK
STRUCTURE	X BOTH	X WORK IN PROGRESS	X EDUCATIONAL	X PRIVATE RESIDENCE
SITE	PUBLIC ACQUISITION	ACCESSIBLE	ENTERTAINMENT	RELIGIOUS
OBJECT	IN PROCESS	YES RESTRICTED	GOVERNMENT	SCIENTIFIC
	BEING CONSIDERED	X YES UNRESTRICTED	INDUSTRIAL	TRANSPORTATION
		NO	X MILITARY	OTHER

4 OWNER OF PROPERTY

NAME Multiple Ownership

STREET & NUMBER

CITY TOWN

VICINITY OF

STATE

5 LOCATION OF LEGAL DESCRIPTION

COURTHOUSE
REGISTRY OF DEEDS, ETC Spokane County Courthouse

STREET & NUMBER S1116 Broadway

CITY TOWN Spokane

STATE Washington

6 REPRESENTATION IN EXISTING SURVEYS

TITLE Washington State Inventory of Historic Places

DATE 1974

FEDERAL X STATE COUNTY LOCAL

DEPOSITORY FOR SURVEY RECORDS Washington State Parks & Recreation Commission

CITY TOWN Olympia

STATE Washington

7 DESCRIPTION

CONDITION		CHECK ONE	CHECK ONE
<input type="checkbox"/> EXCELLENT	<input type="checkbox"/> DETERIORATED	<input type="checkbox"/> UNALTERED	<input checked="" type="checkbox"/> ORIGINAL SITE
<input checked="" type="checkbox"/> GOOD	<input type="checkbox"/> RUINS	<input checked="" type="checkbox"/> ALTERED	<input type="checkbox"/> MOVED DATE _____
<input type="checkbox"/> FAIR	<input type="checkbox"/> UNEXPOSED		

DESCRIBE THE PRESENT AND ORIGINAL (IF KNOWN) PHYSICAL APPEARANCE

Fort George Wright, planned as a regimental post, was a part of the mobile army of the interior and was utilized for the training and posting of the infantry. In an era of relative world peace, Spokane made an ideal location for the post because of its central railroad location; in later years the value of the transportation center made Fort Wright one of two fatigue hospitals in the Northwest. Because of its useful site the post was not abandoned until 1958 when it was replaced by the more modern posts of Geiger Field and Fairchild Air Force Base. The great retention of original buildings permits a view of turn of the century military architecture and of a post that is little altered.

As Hangman (Latah) Creek flowing north joins the Spokane River flowing west, the enlarged river bends easterly and then northwest; Fort Wright occupies the bluff along this bend in the river. The original Reservation was 1000 acres; nominated are some 250 acres of that property which contain the most significant structures. The bluff is largely forested with fir, pine and spruce, and the steep banks of the river are covered with grass and rocks. A majority of the training facilities were formerly located along the river and the edge of the reservation surrounding the developed portion of the fort. The Fort George Wright Historic District is described by an irregular outline formed by Government Way on the west, the Spokane River and post cemetery on the north and Fort Wright Drive and the original reservation boundary on the south and east. The nominated property is contained within segments of Sections 10 and 11, Township 25 North, Range 42 East of the Willamette Meridian.

Fort Wright, as a training post, had one principle type of permanent structure - red brick with granite foundation. Secondary original buildings were either frame or fieldstone. Later construction was either brown brick, fieldstone or frame. Virtually all structures in the northeast part of the district have been removed, including those originally designated as permanent structures. However, with two major exceptions (the administration buildings and guardhouse), the structures removed were constructed in the 1930's and 40's and the appearance of Fort Wright at present is not greatly different than it was in 1910. Intrusions within the area are of limited impact largely because of their small scale and the effective screening of the heavily wooded grounds. Most substantial of these intrusions are the structures of Spokane Falls Community College which are low lying modern buildings principally to the east of Fort Wright Drive and consequently out of the district; an exception is the structure occupying the former site of the guardhouse and administration building. Since the visual focus in the district is away from this property and since it too is screened from complete view by trees, its impact is not substantial. The cohesiveness of the district is enhanced by the placement of the majority of the secondary and intrusive structures behind the primary structures where they are again effectively screened.

The developed portion of the post forms an irregular polygon with the western, or original, section of the base a rough triangle. The eastern portion of the post - the barracks and sports area developed during the Depression and War years - has been razed almost entirely with the exception of the Officers' Club and two of the semi-permanent buildings. The triangular portion of the base was divided into nearly equal smaller triangles, and the western segment was devoted to maintenance and work areas. Extending into the maintenance areas was the row of non-commissioned officers quarters completed in the 1890's and 1930's.

The roads outlining the eastern triangle form the letter 'A'; the trapezoidal base of the letter shape forms the parade ground, which is partially intact. To the west of the

UNITED STATES DEPARTMENT OF THE INTERIOR
NATIONAL PARK SERVICE

**NATIONAL REGISTER OF HISTORIC PLACES
INVENTORY -- NOMINATION FORM**

FOR NPS USE ONLY
RECEIVED
DATE ENTERED

CONTINUATION SHEET

ITEM NUMBER 7 PAGE 2

parade ground and facing it are the two U-shaped barracks (1906), the post theater (1943) southwest of the barracks and the PX (1938) - a WPA building adjacent to the barracks on the north. Facing the parade ground on the north was a guardhouse and several administration buildings, constructed 1899-1908, although they have been removed. To the south of the parade ground was the hospital complex; the only remaining building is the chief stewards house, with a new apartment building replacing the original hospital.

The upper portion of the A-shape, above the parade ground, is called the 'Key' or Officers' Row. Seven of the ten buildings are duplex officers' quarters. The two end houses (#2 and #3) were single residences, used by the commanding officer and his second-in-command. The last structure in this grouping was the original Administration Building (#21) used throughout most of its history as a guest house. The large empty spaces along one side of the Key were to be occupied by the "stolen" buildings of the fort, those unbuilt structures removed by political maneuverings at the post's inception.

Original permanent buildings are neo-colonial Georgian structures in red brick with granite and white ornament. Although varying in size, the structures are all two and one-half to three stories in height. A granite base, deep red brick walls, white pillared verandas, segmental or semi-circular arched windows, gable dormers, bracketed boxed cornices, a plain frieze with return or pedimentation, and gabled slate roofs are characteristics of the majority of the original buildings. Brick walks in the half-dozen special patterns created for the fort by a Spokane brickyard form the quiet paths between buildings in the older portions of Fort Wright.

The principle intrusions built in the 1930's - the NCO residences - are a contrast to the original buildings only in color with brown brick replacing the earlier red. Their basic design is late neo-colonial Georgian - a 1930's version of the original buildings - and this 20th century architecture lacks only the verandas typical of the older buildings. Intrusions on the Key, constructed by Fort Wright College of the Holy Names, are red brick with white ornament. Among these, the Commons is a low structure to the northwest of the Key proper. A modern dormitory features the same approximate proportions and roof line as the older buildings. Both structures are harmonious with Fort Wright's original architecture.

A further change in the original appearance of the Key is St. Michael's Mission, constructed in 1884 at Peone Prairie northeast of Spokane for the Spokane Indians and moved to the Fort by the Sisters of the Holy Name to prevent vandalism in 1968. The single story clapboarded structure has a frontal gable with pedimented boxed cornice and returns. A window with a carved pedimented enframingent is located to each side of the frontal entry. The entry is a double two panel door also with a pedimented frame decorated in a geometric floral motif. The frontal gable is decorated with two unusual arrow forms to each side of a central pointed trefoil carved with geometric and pine needle motifs. The brick chimney is located on the left front of the shingled roof gable.

Other intrusions on the western portion of the post are generally harmonious. The Lutheran Elementary school (Garvey Center) made a deliberate effort to blend with the

UNITED STATES DEPARTMENT OF THE INTERIOR
NATIONAL PARK SERVICE

FOR NPS USE ONLY

RECEIVED

DATE ENTERED

**NATIONAL REGISTER OF HISTORIC PLACES
INVENTORY -- NOMINATION FORM**

CONTINUATION SHEET

ITEM NUMBER

7

PAGE

3

surroundings by using the bricks from the demolished Fort Wright Mule Barn for the construction of the newer building. Intrusions on the eastern side of the Fort are less harmonious, with a predominance of modern apartment buildings replacing the 1950's barracks and supporting facilities. The barracks (#601 and #602) are U-shaped red brick neo-colonial Georgian structures used in the 1950's as a SAC Headquarters. The two and one-half story facade is indented only slightly from the frontal gables; both gables project to the rear to form the U-shape. Verandas extend along the front elevation on the first and second stories. Columns are simple tapered round posts linked by double metal railings. Lining the first and second floors are segmental arched, double hung windows with two lights above and two below. The pairs of gable windows are flat arched double hung. Chimney stacks are located to each side of the gables on the rear walls. The interiors have been altered for classroom use.

The Bachelor Officers' Quarters (#20) is a large building approximately two-thirds the size of the barracks. The building is rectangular with short rear gable projections. Red brick on a cut granite base, it is lined with verandas on the first and second floors. Columns are linked by low wooden balustrades and chimney stacks are located on the rear slopes of the side gables. The interior has been modified for a faculty residence.

Buildings #8, 9, 11, 13, 15, 16 and 17 are multiple family officer quarters. Cruciform in plan, the red brick houses are ornamented with white and gray woodwork. The central gable facade is flanked by two verandas that surround the cross gable on each end. The gable facade is four bays wide while the side gables add one bay width to the street facade. Although the same width as the main gable, the cross gables have only two windows on each end. Segmental arched double hung windows are located on the first and second levels of the gable facade. Similar windows are located on the recessed cross gable on the veranda and the floor above. The veranda roofs are of the shed type and are located immediately below the second floor windows. Gable cornices are boxed, with decorated frieze and supporting dual corner brackets below the return. Gable dormers to each side of the central gable lack only the decorated frieze and brackets of the main roof line. The four windows of the central gable are stilted, semi-circular with compound arch surrounds in brick; the double vents above are ornamented in the same manner. The cross gable windows are similarly treated but are limited to two on each level and a single vent. Dormer windows are flat, double hung and multi-paned. In most of the buildings dividing walls have been removed between the two sections, however fireplaces and woodwork have been restored in many of the rooms.

The original NCO residences (#704 and 705) are much less ornate than the otherwise similar officers' quarters. Rectangular in plan, the red brick main facades are parallel to the street. Verandas are formed by six square columns with the central four linked by a wooden balustrade; entry to each section of the duplex building is through doors at the far left and right of the veranda. The four veranda windows are segmental arched with six over six lights. A segmental arched double hung window with three over three lights and granite sills is located to each side of the veranda. The veranda has a hipped shed roof descending from the granite sill of the second floor windows. A single window of a

UNITED STATES DEPARTMENT OF THE INTERIOR
NATIONAL PARK SERVICE

**NATIONAL REGISTER OF HISTORIC PLACES
INVENTORY -- NOMINATION FORM**

FOR NPS USE ONLY
RECEIVED
DATE ENTERED

CONTINUATION SHEET

ITEM NUMBER 7 PAGE 4

similar type is centrally located on the side gable end; the third floor gable window is half-round with granite sills and keystone. Eaves of the veranda and main roof have boxed cornices and the upper frieze is decorated. The gable cornice is plain, boxed with return. Chimneys are located centrally on the front and rear slopes. The buildings are currently unoccupied pending restoration.

The four Depression era additions to the NCO residences (#702, #703, #706 and #707) are the most elaborate houses on the Fort despite brown brick replacing red for the facade, the two and one-half story houses are not intrusive, being merely a later rendition of the neo-colonial style. The rectangular buildings have one-story wings to each side, as well as an entry way that projects from the main facade. Oriel windows are located to each side of the entry. Two multipane casement windows with fanlights on the main facade are complimented by similar doors to each side of the projecting entry. Four flat double-hung and multi-paned windows are located on the second floor main facade with two similar windows on the gable face. The sole ornaments of the third floor gable facade are pairs of vents. The cornice is boxed and the roof shingled. Chimneys straddle the ridge at either end of the gable. The houses are now used as residences for the President and other faculty members of Fort Wright College.

The two single family officers' quarters (building #2 and #3) are L-shaped in plan. A veranda extends across the front of each building in a design similar to those on the other officers' quarters. Windows along the veranda are segmental arched and double hung. An exception is the double hung half-size window to the left of the entry on the front facade. The main entrance has paneled double doors with four recessed lights. A second entry from the veranda is on the rear facade. Second floor windows are segmental arched and double-hung with the exception of the half-size windows above the main door and first floor half-size window, all of which light the interior stairwell. Gables are pedimented with plain boxed cornices. Gable fenestration is pairs of double hung semi-circular arched windows with radiating voussoirs. Chimneys straddle the ridge at either end of the cross gable. Building #3 has been restored as a museum while #2 is used as a faculty residence.

Most impressive of the smaller buildings on the Key is #21, originally the Post's Administration Building, later a guest house and presently the Music Building of the College. The building is rectangular and it faces the Key. The veranda is five bays wide with two additional bays on either side. Steps rise to the veranda which has a pedimented gable interrupting its hipped shed roof. The supporting columns are square with wide astragals. A three-panel glazed door with side lights forms the main entry.

Number 529, the hospital stewards quarters is the oldest house on the facility and was erected in 1898. Planned as the residence for the engineer during construction of the remaining buildings, this single family house was used by the chief steward during the years of hospital operation. The house shares most characteristics of the other other dwellings with red brick, white trim and a slate roof, but the total effect is much more Queen Anne, the house being a narrow and rather blank appearing structure lacking much of the later ornament of the other houses.

UNITED STATES DEPARTMENT OF THE INTERIOR
NATIONAL PARK SERVICE

**NATIONAL REGISTER OF HISTORIC PLACES
INVENTORY -- NOMINATION FORM**

FOR NPS USE ONLY
RECEIVED
DATE ENTERED

CONTINUATION SHEET

ITEM NUMBER

7

PAGE

5

Most interesting of the original work buildings is the Fort Wright bakery (#818) now used as the Education Laboratory. Single story red brick on a granite base, the building is unique among the Fort structures for its high hipped roof with a clere story rising above the central portion of the roof beneath its own smaller hip roof. Chimneys are located on all but the rear slope.

Remaining permanent buildings include the Officers' Club (#400), a frame two-story structure erected in 1939 and now used by Spokane Falls Community College as a Student Union Center (not included in the district); the Post Exchange (#600), a two story stone building built in 1938; the Fire Station (#610), red brick constructed in 1906; the PX service station (#700), a 1937 concrete and stucco building; the Commissary (#811) completed in 1903 in the red brick similar to all older Fort Wright buildings; a grey stone building completed in 1934 as the Paint Shop (#812) but now used as an art gallery; a building completed in 1920 as the Carpentry Shop (#815) now the Chemistry Building, red brick with stone trim and a concrete foundation; the Quartermaster Office (#816), red brick with a stone foundation presently used as the Biology Building; and the Ordnance Building (#817), constructed in 1903 and similar to #811 and #816 - originally all three were connected by a railroad spur.

Semi-permanent buildings remaining include the Motor Repair Shop (#262) and the Post Gymnasium (#266), both built during the 1940's and now used by Spokane Falls Community College beyond the district boundary; the Post Chapel (#407), a frame clapboarded structure which was relocated to the rear of Building 20 in 1962; a Repair Shop (#810), a frame structure with concrete floors built in 1943. National Guard units continue to use three frame warehouses (#800, #802 and #804) of a similar vintage for equipment storage.

Drill and training areas are located along the river banks and the western edge of the post. The majority of the buildings here have been dismantled with the exception of the powder magazine (#838) built in 1899. The magazine is red brick on a granite foundation. Its interior is lined with tongue and groove boards placed on the diagonal. As with all the permanent buildings the roof is slate, its gable medium pitch. The remaining evidence of the drill and training ground has largely erased and only occasional shells are reminders of the rounds of ammunition fired by 60 years of recruits.

UNITED STATES DEPARTMENT OF THE INTERIOR
NATIONAL PARK SERVICE

FOR NPS USE ONLY
RECEIVED
DATE ENTERED

**NATIONAL REGISTER OF HISTORIC PLACES
INVENTORY -- NOMINATION FORM**

CONTINUATION SHEET

ITEM NUMBER 7

PAGE 6

PRIMARY STRUCTURES:

<u>Building No.</u>	<u>Title</u>	<u>Date of Construction</u>
2	Single Officers' Quarters	1906
3	" " "	1904
8	Duplex Officers' Quarters	1906
9,11,13,15	" " "	1904
16	" " "	1900
17	" " "	1904
21	Administration Building	1907
529	Hospital Stewards Quarters	1898
601	Barracks	1906
602	"	1906
610	Fire Station	1906
702	NCO Duplex Quarters	1933
703	" " "	1933
704	" " "	1899
705	" " "	1899
706	" " "	1933
707	" " "	1933
811	Commissary	1903
816	Quartermaster's Office	1907
817	Ordnance Building	1903
818	Bakery	1908
838	Powder Magazine	1899

SECONDARY STRUCTURES:

407	Post Chapel	1942
600	Post Exchange	1938
700	PX Service Station	1937
809	Motor Repair Shop	1920
812	Paint Shop	1934
815	Carpentry Shop	1920
828	NCO Quarters	1931
830	" "	1932
none	St. Michael's Mission	1884

INTRUSIVE STRUCTURES:

603	Theater	1943
800	Warehouse	1940
802	Warehouse	1940
804	Warehouse	1940
810	Cold Storage Building	1943

UNITED STATES DEPARTMENT OF THE INTERIOR
NATIONAL PARK SERVICE

FOR NPS USE ONLY
RECEIVED
DATE ENTERED

**NATIONAL REGISTER OF HISTORIC PLACES
INVENTORY -- NOMINATION FORM**

CONTINUATION SHEET

ITEM NUMBER

7

PAGE

7

<u>Building No.</u>	<u>Title</u>	<u>Date of Construction</u>
824	Gas Station	1939
none	Lutheran Elementary School	1967
none	Commons	1963
none	Regents Hall Dormitory	1965
none	Spokane Falls Community College	1967
none	Garvey Center Montessori School	1964

8 SIGNIFICANCE

PERIOD		AREAS OF SIGNIFICANCE -- CHECK AND JUSTIFY BELOW				
<input type="checkbox"/> PREHISTORIC	<input type="checkbox"/> ARCHEOLOGY PREHISTORIC	<input type="checkbox"/> COMMUNITY PLANNING	<input type="checkbox"/> LANDSCAPE ARCHITECTURE	<input type="checkbox"/> RELIGION		
<input type="checkbox"/> 1400-1499	<input type="checkbox"/> ARCHEOLOGY-HISTORIC	<input type="checkbox"/> CONSERVATION	<input type="checkbox"/> LAW	<input type="checkbox"/> SCIENCE		
<input type="checkbox"/> 1500-1599	<input type="checkbox"/> AGRICULTURE	<input type="checkbox"/> ECONOMICS	<input type="checkbox"/> LITERATURE	<input type="checkbox"/> SCULPTURE		
<input type="checkbox"/> 1600-1699	<input checked="" type="checkbox"/> ARCHITECTURE	<input type="checkbox"/> EDUCATION	<input checked="" type="checkbox"/> MILITARY	<input type="checkbox"/> SOCIAL/HUMANITARIAN		
<input type="checkbox"/> 1700-1799	<input type="checkbox"/> ART	<input type="checkbox"/> ENGINEERING	<input type="checkbox"/> MUSIC	<input type="checkbox"/> THEATER		
<input checked="" type="checkbox"/> 1800-1899	<input type="checkbox"/> COMMERCE	<input type="checkbox"/> EXPLORATION/SETTLEMENT	<input type="checkbox"/> PHILOSOPHY	<input type="checkbox"/> TRANSPORTATION		
<input checked="" type="checkbox"/> 1900-	<input type="checkbox"/> COMMUNICATIONS	<input type="checkbox"/> INDUSTRY	<input type="checkbox"/> POLITICS/GOVERNMENT	<input type="checkbox"/> OTHER (SPECIFY)		
		<input type="checkbox"/> INVENTION				

SPECIFIC DATES 1895-1958

BUILDER/ARCHITECT

STATEMENT OF SIGNIFICANCE

Fort George Wright is a significant reminder of Spokane's long military history, its existence springing from the economic needs of the community. Designed as a replacement for Fort Spokane about 50 miles northwest, the military reservation was in use from 1897 to 1958, creating new social, economic and community growth patters for the city. Planned as a regimental post, the failure to fulfill this purpose had a well defined effect on the northwest military effort in World War II. It is architecturally one of the best preserved forts in the Inland Empire, owing its survival to a hiatus of post-war development. Its tree-lined lanes and red brick buildings belie its military purpose; its idyllic quality was achieved at the turn of the century when America was not yet a world power and peace seemed to be a permanent condition.

Fort George Wright is the lineal descendent of Old Fort Spokane located near Davenport, Washington (established 1880 and abandoned 1899). Spokane had received some economic benefit from the old fort prior to 1890, but following the city's disastrous fire of 1889, income from the fort had greater importance. This income was decreasingly effective in the depression of the 1890's and Spokane's small but growing population found itself hard pressed financially. When it was learned that a new military base was to be established in the Northwest, business leaders mobilized lobbying power to have it located in Spokane. Times were so hard that finding enough money to send representatives to the Nation's capital presented a major problem. After two unsuccessful tries, a third attempt brought a commitment from Washington and an August, 1895 deadline for approval. The City of Spokane was required to provide 1000 acres of land, permanent water rights and a sum of \$48,000 in cash and negotiable funds. Spokane citizens responded promptly, meeting every provision except the last one, falling short by over \$5,000. To raise money, a huge Christmas tree party was planned. A \$1.00 ticket (a day's wages in 1895) attached to each tree decoration entitled the holder to a prize donated by some member of the community. Prizes varied from a 25¢ pound of tea, babysitting, and apple pies, to a rifle and a team of horses with wagon. The donations were sufficient to ensure the building of a fort.

Construction began in 1896 with two small brick buildings providing housing for the engineers and their families. These buildings later used for NCO family quarters remained in use until 1975. Post buildings were largely completed by 1906 but building continued on this active post until 1958. Most of the later structures were not intended to be permanent; those that were provide a contrasting panorama of military architecture over the 20th century.

Shortchanged in the political arena, Fort George Wright was completed at only half its legal size. Intended as a regimental post, Congress had approved construction of facilities for four battalions but in fact there was insufficient space for two battalions. During most of Fort Wright's history portions of the two battalions had to be quartered at Missoula or Boise. This deficiency was discovered by the base in 1933 when it was ordered to provide quarters for the CCC. Investigation by the War Department revealed that when

UNITED STATES DEPARTMENT OF THE INTERIOR
NATIONAL PARK SERVICE

**NATIONAL REGISTER OF HISTORIC PLACES
INVENTORY -- NOMINATION FORM**

FOR NPS USE ONLY

RECEIVED

DATE ENTERED

CONTINUATION SHEET

ITEM NUMBER 8 PAGE 2

the bill was sponsored in 1895, Senator Francis E. Warren, father-in-law to General Pershing, provided for a similar regimental post in his home state, Wyoming. In some mysterious manner, Warren managed to appropriate some of the funds designated for Fort Wright's buildings including 50 officers' quarters, 40 NCO quarters, six barracks and additional supplementary buildings. The economic and military effect was to make Fort Warren, Wyoming, a brigade post in World War II, while Fort Wright was merely a fatigue post during the same period and was eventually declared surplus.

Despite its size, Fort Wright was one of the finest posts in the West. Unlike many bases that were isolated from the social life of the community, Fort Wright was fully part of Spokane's day-to-day activities. Spokane at the turn of the century was considered to be one of the most sophisticated cities in the west; its principal theater, the Auditorium, boasted the largest stage in the United States. The population was growing rapidly with wealth from mines and railroads and the schemes of every young capitalist that inhabited the city.

Most amazingly, Spokane welcomed the military with open arms, unlike most western cities. It ran the street car lines to the base to enable speedy traffic to and from the post. Its welcome was for the economic benefits the fort brought and for the new elite of educated people. It generated an ever increasing economic base with a significant demand for a multiplicity of jobs, services and supplies. From the beginning, it was a people-oriented post. Hundreds of men took their basic military training at Fort George Wright. Social events, public concerts on the spacious grounds, Fourth of July celebrations and many a lively baseball game on the huge recreation field were enjoyed by public and military spectators alike. Children from the base attended Spokane schools, and a story is told of two white mules which were privileged to pull the school wagon each day. All transportation to and from Fort Wright was by horse or mule as late as 1932, although in 1915, the commandant, was assigned two cars for his use. By the mid-thirties, the city had grown out to the Fort. The Hangman Creek Bridge, a structural achievement in 1914, enabled greater development of the city along the west bank of Hangman Creek and today the fort is within the city limits.

During World War II, the fort was one of two major fatigue hospitals in the Northwest and served all military dependents in Eastern Washington. Only the chief stewards quarters (built in 1897) remains of the hospital complex; the other structures were destroyed by fire. The base remained active until 1961.

After it was declared surplus the two major purchasers of the developed areas were the Fort George Wright College of the Holy Names and the Spokane Falls Community College. Most of the original post buildings are located on the campus of Fort Wright College.

Fort Wright College has made one significant addition to the historic structures on the property. The owners of St. Michael's Mission, the Sisters of the Holy Name, moved the historic mission to Fort George Wright's campus following vandalism and a series of fires at the original site. The building was constructed in 1884 on Peone Prairie by Father

UNITED STATES DEPARTMENT OF THE INTERIOR
NATIONAL PARK SERVICE

**NATIONAL REGISTER OF HISTORIC PLACES
INVENTORY -- NOMINATION FORM**

FOR NPS USE ONLY
RECEIVED
DATE ENTERED

CONTINUATION SHEET

ITEM NUMBER 8 PAGE 3

Cataldo, Jesuit missionary to the Spokane and Coeur d'Alene tribes. The building was used by the Indians until private land ownership by whites virtually isolated it from their community. Although it was moved in 1968, the building has been little altered over the years.

Spokane remains a military community in many ways but it is doubtful that either of the recent installations, Geiger and Fairchild, has had the degree of impact socially or architecturally that was engendered by Fort Wright. The red brick buildings and shadowed walks are a continual reminder of Spokane's peacetime army and their conversion to campus use is consistent with Spokane's atmosphere and traditions.

9 MAJOR BIBLIOGRAPHICAL REFERENCES

Army & Air Force Building Records, Fairchild Airbase.

Fort Wright College Historical Museum Pamphlet, Fort Wright College, 1975.

News Articles (various dates), Spokane Daily Chronicle, Spokane Spokesman Review.

10 GEOGRAPHICAL DATA

ACREAGE OF NOMINATED PROPERTY 250

UTM REFERENCES See Continuation Sheet

A	_____	_____	_____	B	_____	_____	_____
	ZONE	EASTING	NORTHING		ZONE	EASTING	NORTHING
C	_____	_____	_____	D	_____	_____	_____

VERBAL BOUNDARY DESCRIPTION

An area including portions of sections 10, 11, and 14, Township 25 North, Range 42 East of the Willamette Meridian defined by the Spokane River to the northeast, the property line on the northwest side of the former George Wright Air Force Base between the Spokane River and Government Way, Government Way from its northernmost intersection with the above property line to the southern boundary of the former Air Force Base, and a line running due north through a point 1300 feet west of the corner of sections 10, 11, 15, and 14.

LIST ALL STATES AND COUNTIES FOR PROPERTIES OVERLAPPING STATE OR COUNTY BOUNDARIES

STATE	CODE	COUNTY	CODE
STATE	CODE	COUNTY	CODE

11 FORM PREPARED BY

NAME/TITLE Sister Mary Dunton - Director - Fort Wright College Historical Museum
Patsy M. Garrett - Historic Preservation Specialist

ORGANIZATION Office of Archaeology & Historic Preservation DATE January 27, 1976

STREET & NUMBER W2316 First Avenue TELEPHONE _____

CITY OR TOWN Spokane STATE Washington

12 STATE HISTORIC PRESERVATION OFFICER CERTIFICATION

THE EVALUATED SIGNIFICANCE OF THIS PROPERTY WITHIN THE STATE IS

NATIONAL STATE LOCAL

As the designated State Historic Preservation Officer for the National Historic Preservation Act of 1966 (Public Law 89-665) I hereby nominate this property for inclusion in the National Register and certify that it has been evaluated according to the criteria and procedures set forth by the National Park Service

STATE HISTORIC PRESERVATION OFFICER SIGNATURE *J. M. ...*

TITLE State Historic Preservation Officer DATE March 15, 1976

FOR NPS USE ONLY	
I HEREBY CERTIFY THAT THIS PROPERTY IS INCLUDED IN THE NATIONAL REGISTER	DATE _____
DIRECTOR, OFFICE OF ARCHEOLOGY AND HISTORIC PRESERVATION	DATE _____
ATTEST	DATE _____
KEEPER OF THE NATIONAL REGISTER	

E 11/464270/5281140

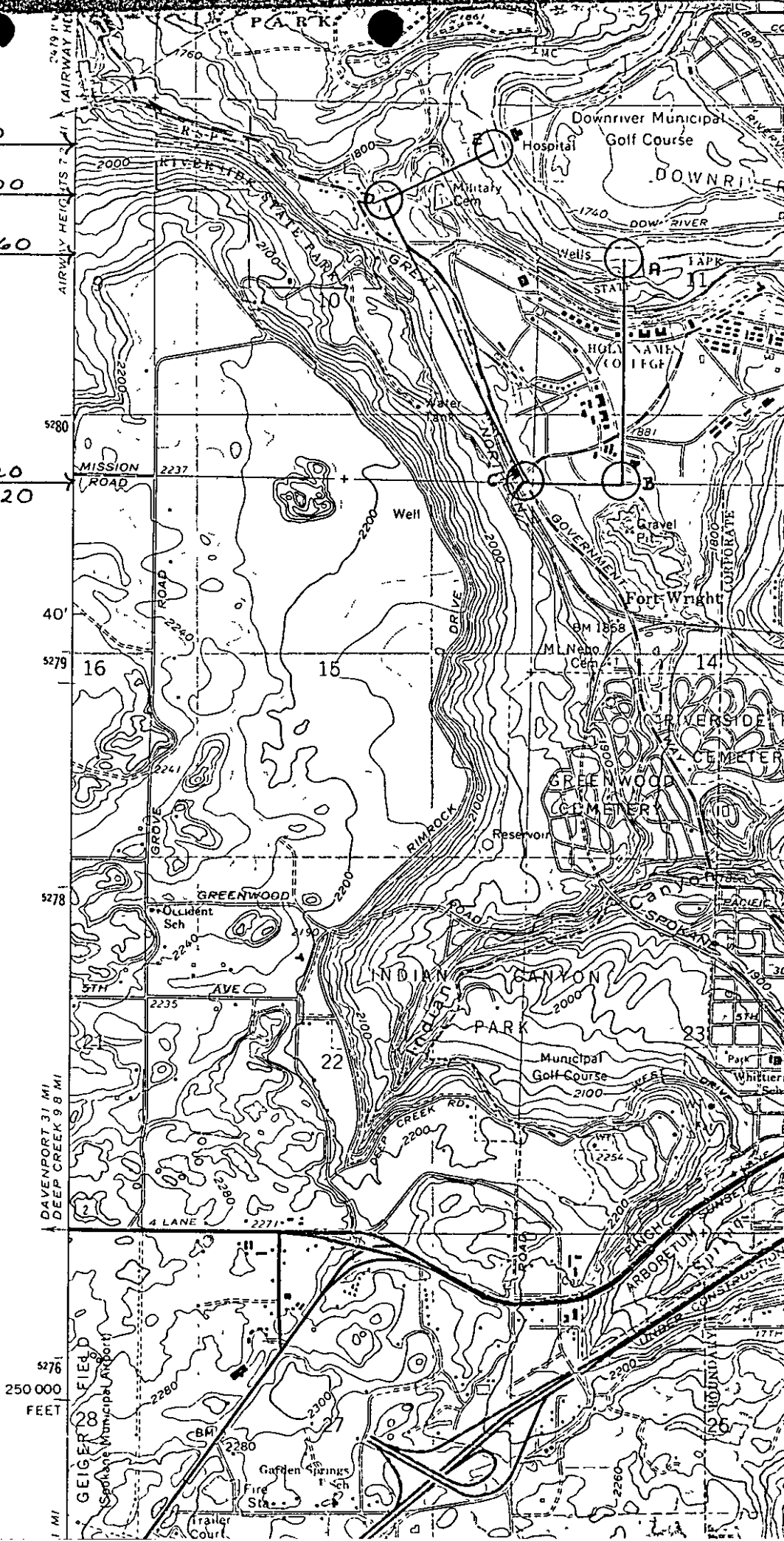
D 11/463800/5280900

A 11/464820/5280660

C 11/464380/5279720

B 11/464800/5279720

Spokane NW
7.5
1963



UNITED STATES DEPARTMENT OF THE INTERIOR
NATIONAL PARK SERVICE

**NATIONAL REGISTER OF HISTORIC PLACES
INVENTORY -- NOMINATION FORM**

FOR NPS USE ONLY
RECEIVED
DATE ENTERED

CONTINUATION SHEET

ITEM NUMBER 10 PAGE 2

- A. 11/464820/5280660
- B. 11/464800/5279720
- C. 11/464380/5279720
- D. 11/463800/5280900
- E. 11/464270/5281140

DOWN RIVER GOLF COURSE

Ft. George Wright Historic District

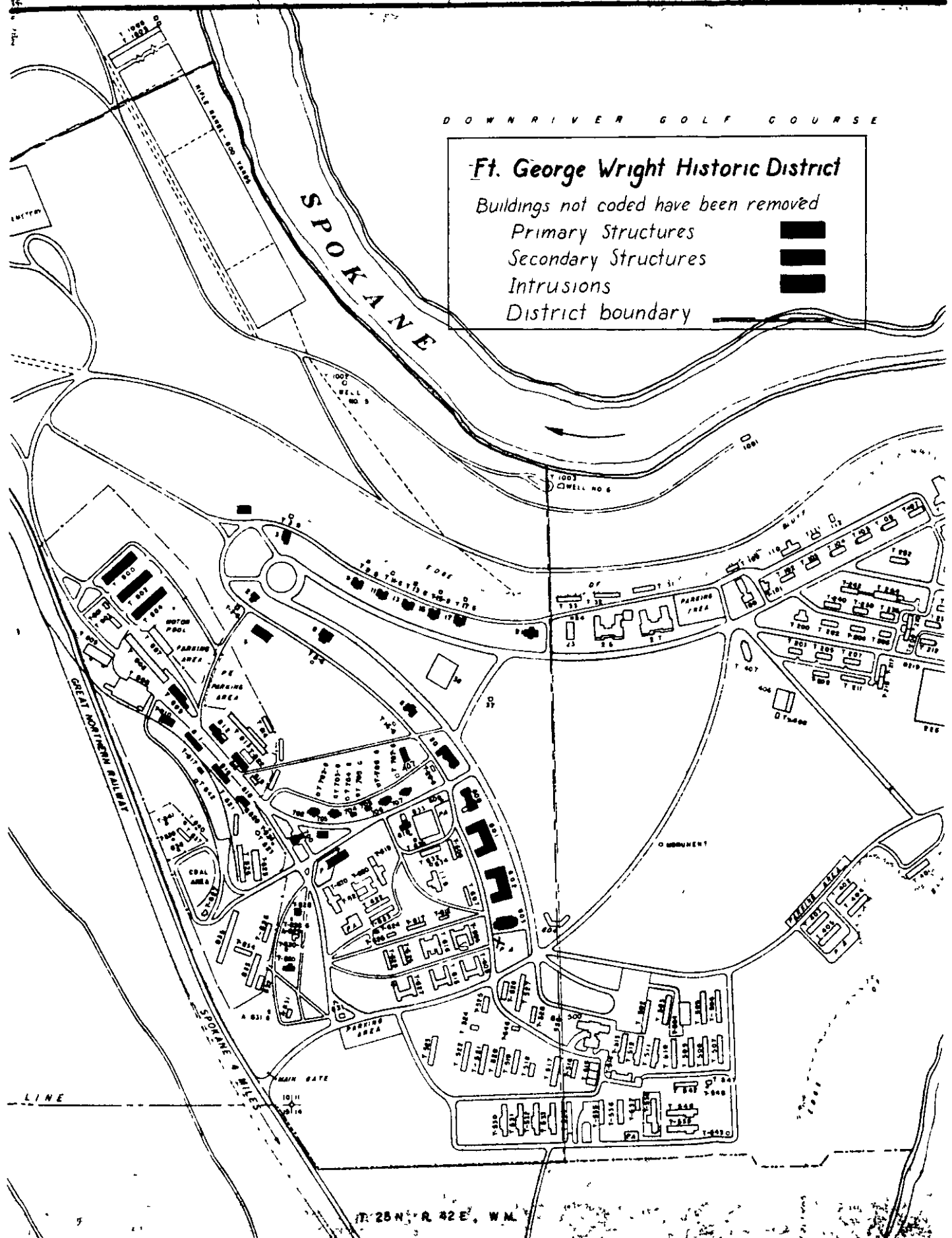
Buildings not coded have been removed

Primary Structures

Secondary Structures

Intrusions

District boundary

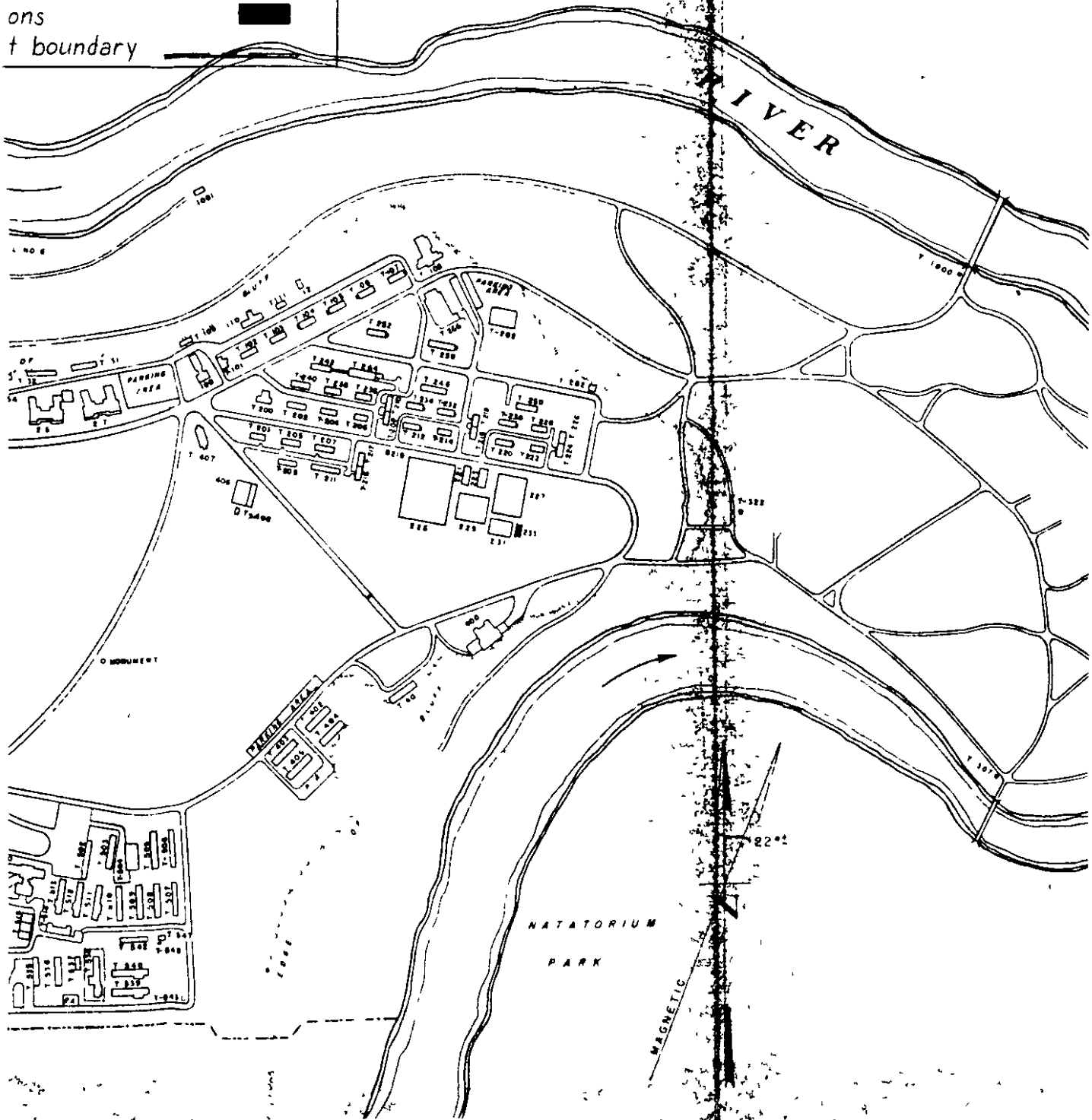


T. 25 N. R. 42 E., W.M.

ER GOLF COURSE

Wright Historic District

- not coded have been removed
- by Structures
- by Structures
- ons
- boundary



3 MAP REFERENCE

Source Corps of Engineers, U S Army

SCALE 1" = 400'

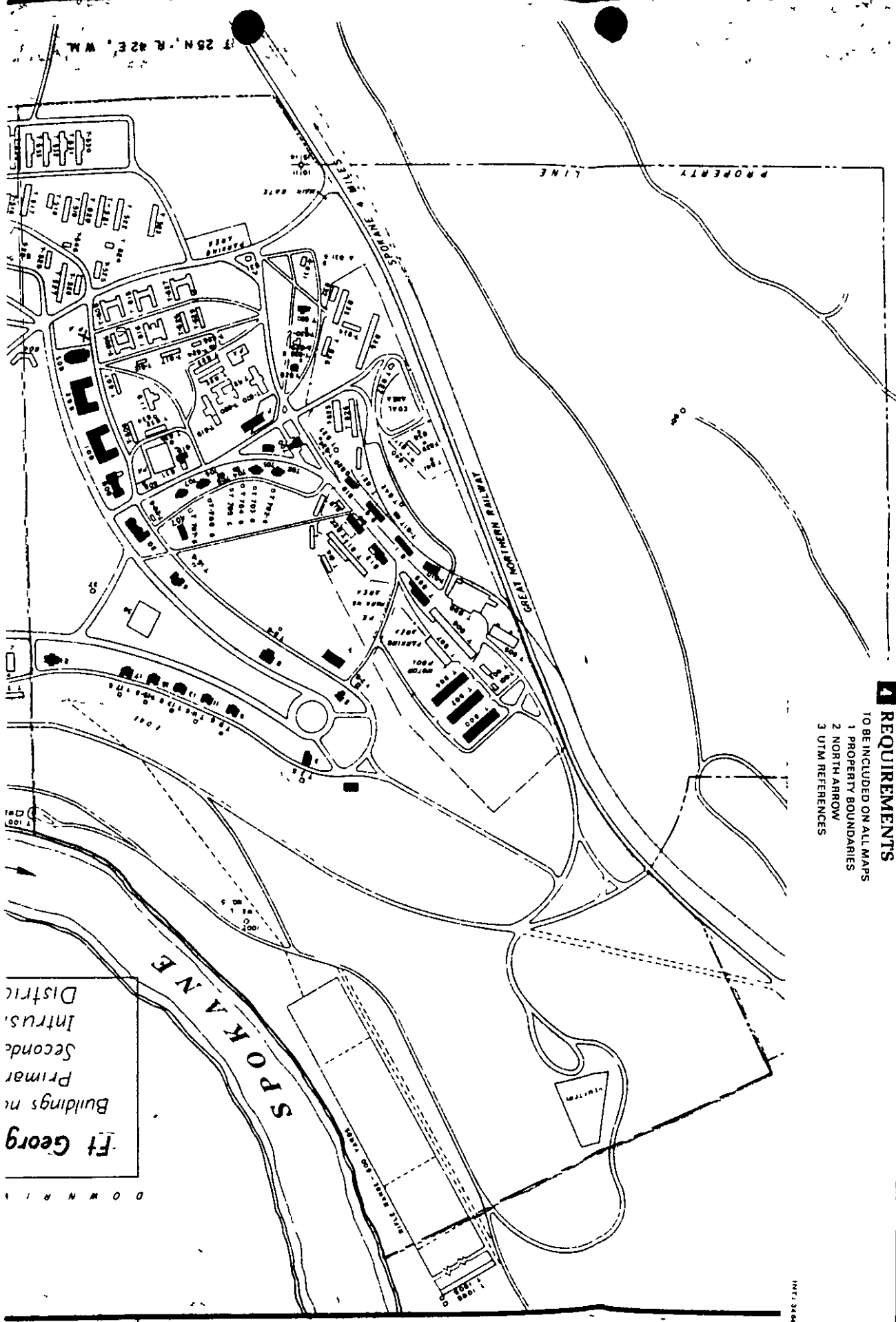
DATE

November 1951 - revised February 1976

4 REQUIREMENTS

TO BE INCLUDED ON ALL MAPS

- 1 PROPERTY BOUNDARIES
- 2 NORTH ARROW
- 3 UTM REFERENCES

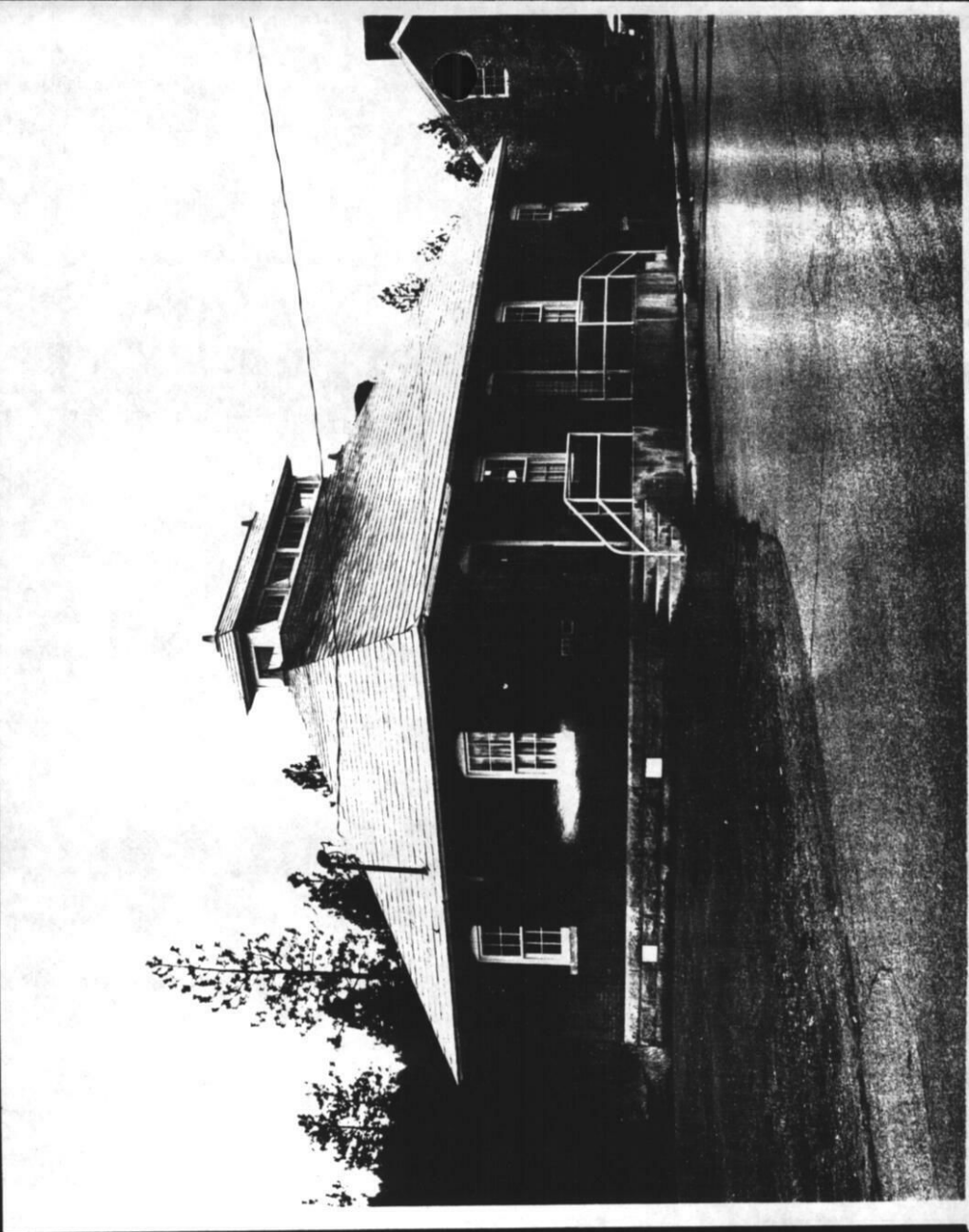


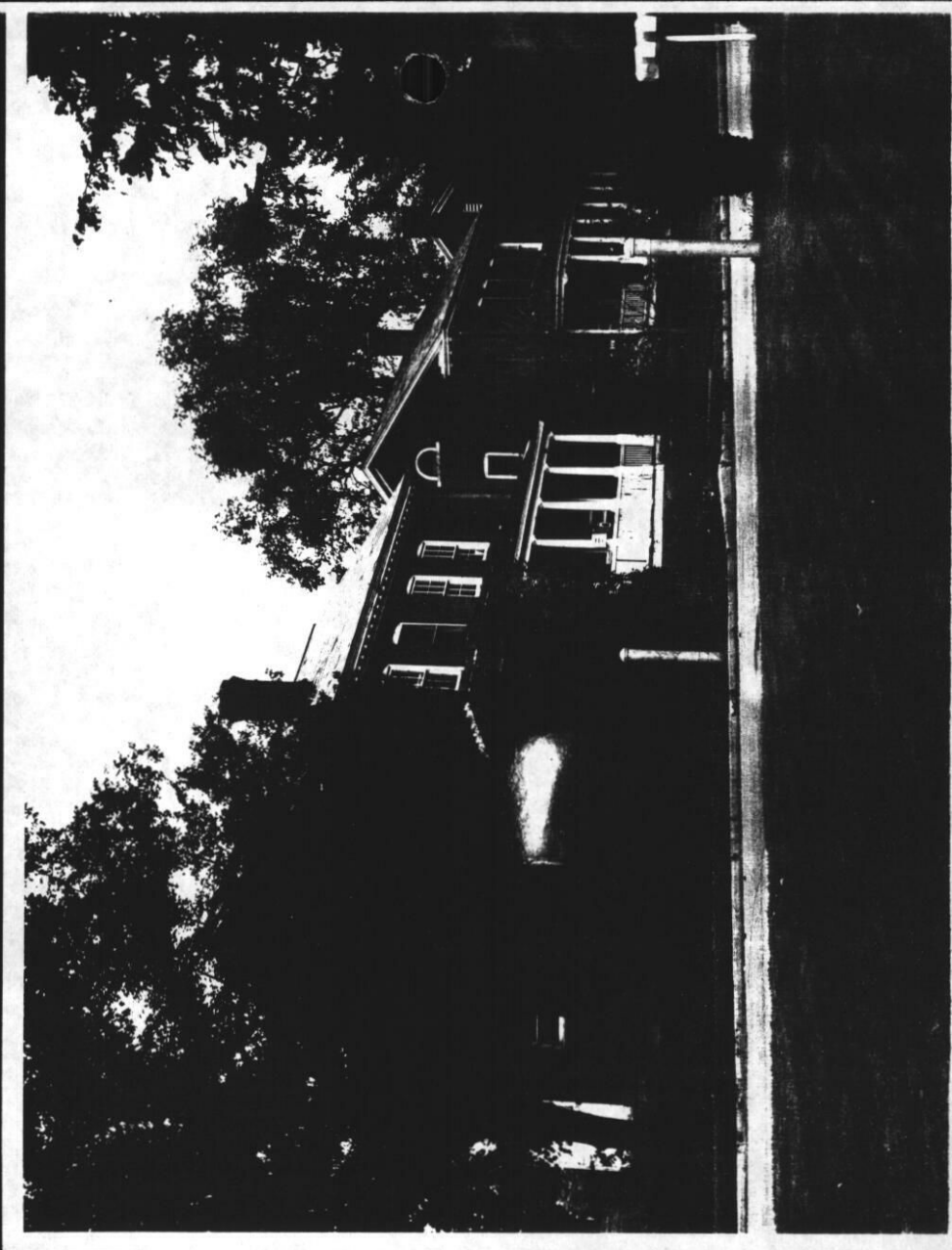
Ft George
 Buildings n
 Primar
 Seconde
 Intrus.
 Distric

DOWN RIVER

T 25N R 42E W.M.

INT: 3464-75







UNITED STATES DEPARTMENT OF THE INTERIOR
NATIONAL PARK SERVICE

**NATIONAL REGISTER OF HISTORIC PLACES
PROPERTY PHOTOGRAPH FORM**

FOR NPS USE ONLY

RECEIVED

DATE ENTERED

SEE INSTRUCTIONS IN *HOW TO COMPLETE NATIONAL REGISTER FORMS*
TYPE ALL ENTRIES ENCLOSE WITH PHOTOGRAPH

1 NAME

HISTORIC

Fort George Wright Historic District

AND/OR COMMON

2 LOCATION

CITY, TOWN
Spokane

____ VICINITY OF

COUNTY
Spokane

STATE
Washington

3 PHOTO REFERENCE

PHOTO CREDIT Jake Thomas

DATE OF PHOTO Sept. 1975

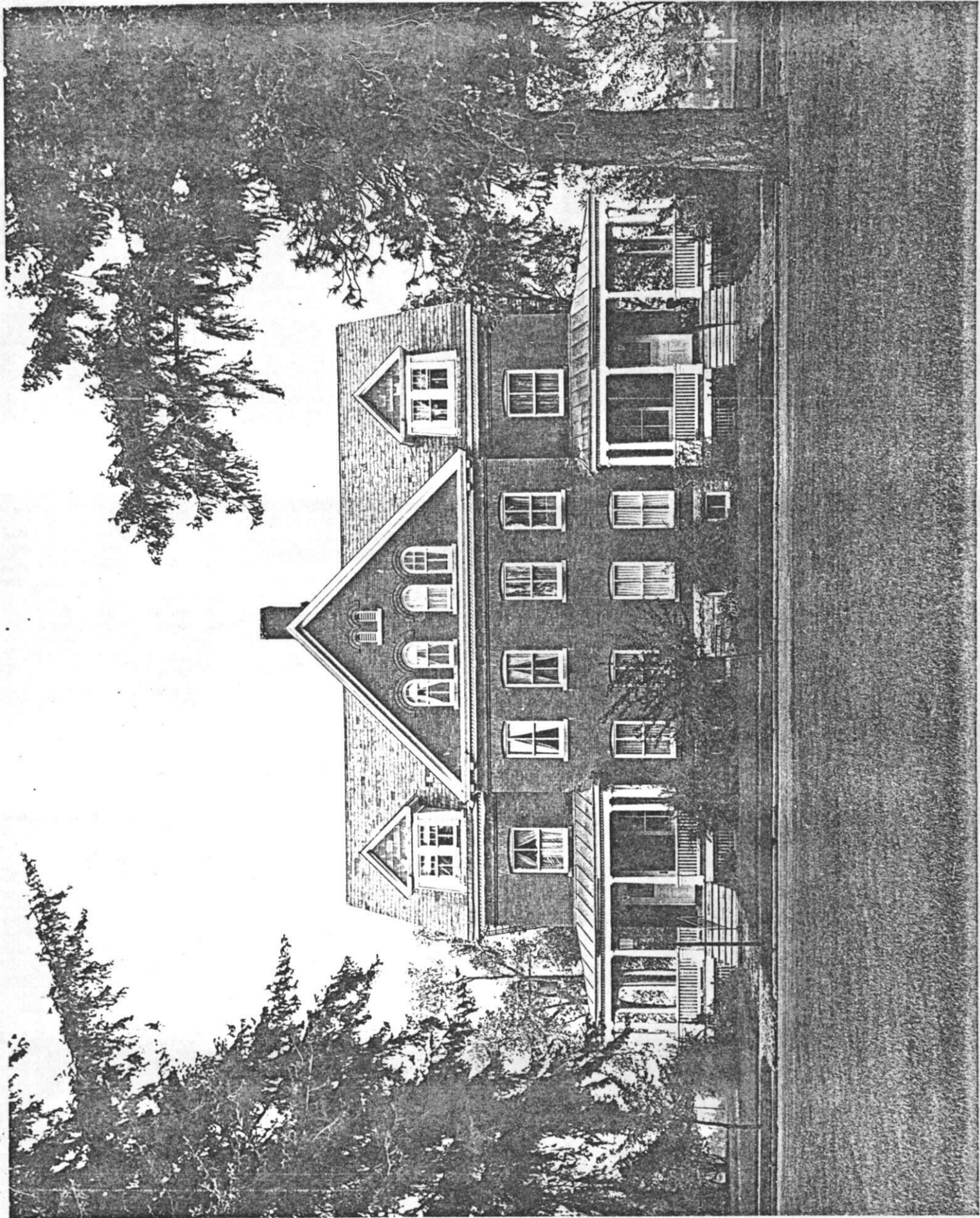
NEGATIVE FILED AT Washington State Parks and Recreation Commission

4 IDENTIFICATION

DESCRIBE VIEW, DIRECTION, ETC. IF DISTRICT, GIVE BUILDING NAME & STREET

Building 17, Duplex Officers Quarters; view of south facade

PHOTO NO.
1 of 5



UNITED STATES DEPARTMENT OF THE INTERIOR
NATIONAL PARK SERVICE

**NATIONAL REGISTER OF HISTORIC PLACES
PROPERTY PHOTOGRAPH FORM**

FOR NPS USE ONLY

RECEIVED

DATE ENTERED

SEE INSTRUCTIONS IN *HOW TO COMPLETE NATIONAL REGISTER FORMS*
TYPE ALL ENTRIES ENCLOSE WITH PHOTOGRAPH

1 NAME

HISTORIC

Fort George Wright Historic District

AND/OR COMMON

2 LOCATION

CITY, TOWN

Spokane

____VICINITY OF

COUNTY

Spokane

STATE

Washington

3 PHOTO REFERENCE

PHOTO CREDIT Jake Thomas

DATE OF PHOTO Sept. 1975

NEGATIVE FILED AT Washington State Parks and Recreation Commission

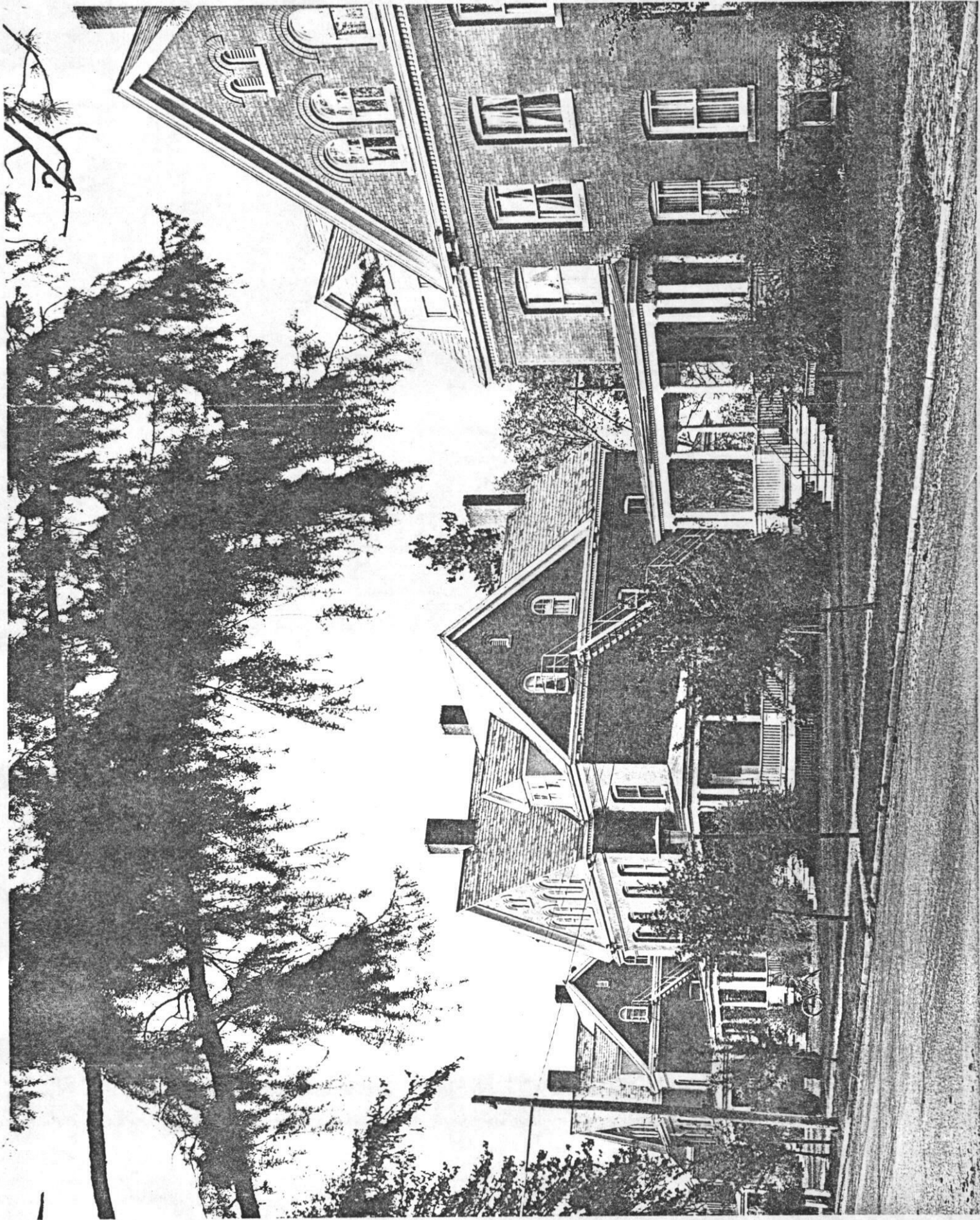
4 IDENTIFICATION

DESCRIBE VIEW, DIRECTION, ETC. IF DISTRICT, GIVE BUILDING NAME & STREET

View of Officers Row looking northwest

PHOTO NO.

2 of 5



UNITED STATES DEPARTMENT OF THE INTERIOR
NATIONAL PARK SERVICE

**NATIONAL REGISTER OF HISTORIC PLACES
PROPERTY PHOTOGRAPH FORM**

FOR NPS USE ONLY

RECEIVED

DATE ENTERED

SEE INSTRUCTIONS IN *HOW TO COMPLETE NATIONAL REGISTER FORMS*
TYPE ALL ENTRIES ENCLOSE WITH PHOTOGRAPH

1 NAME

HISTORIC

Fort George Wright Historic District

AND/OR COMMON

2 LOCATION

CITY, TOWN

Spokane

— VICINITY OF

COUNTY

Spokane

STATE

Washington

3 PHOTO REFERENCE

PHOTO CREDIT Jake Thomas

DATE OF PHOTO Sept. 1975

NEGATIVE FILED AT Washington State Parks and Recreation Commission

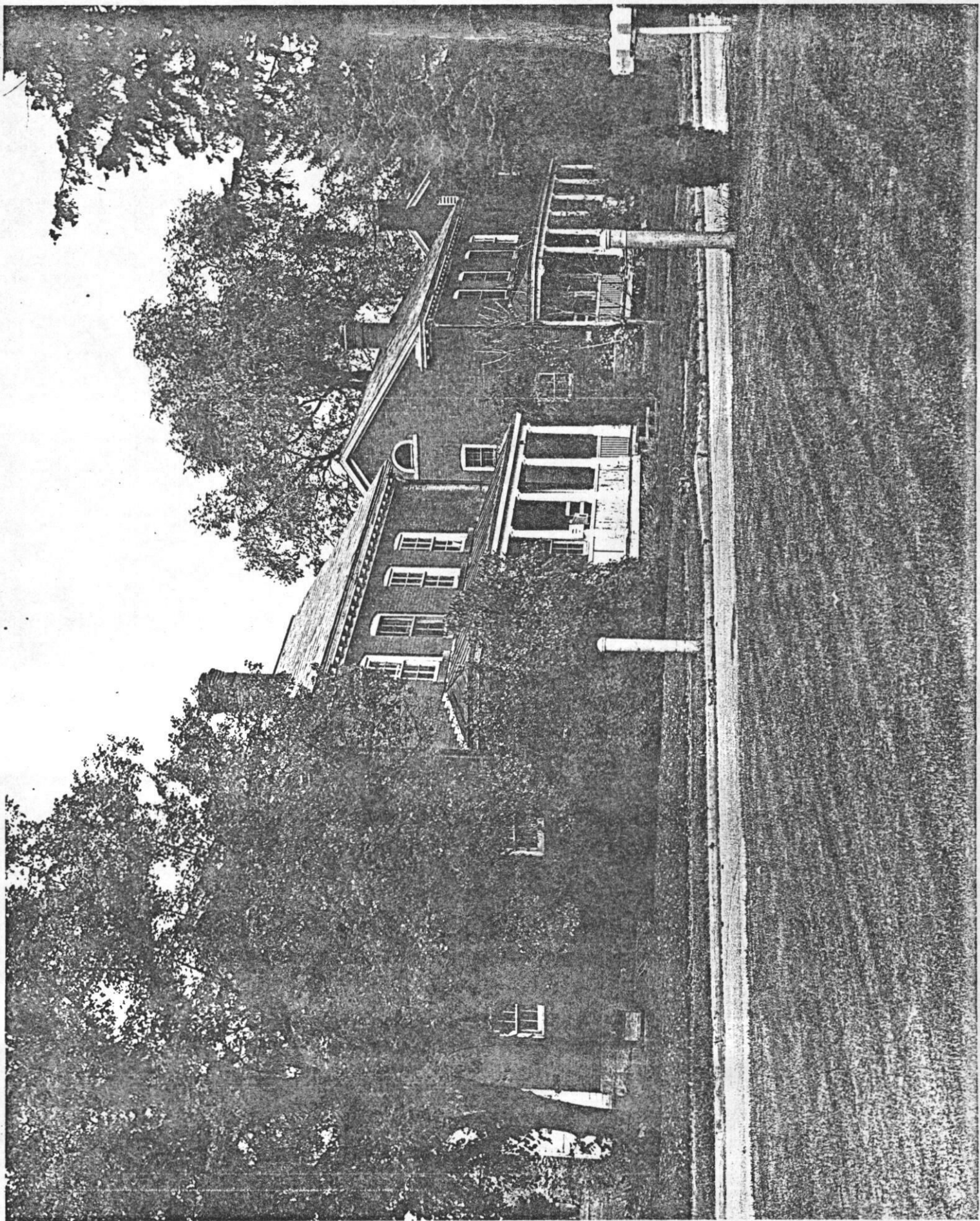
4 IDENTIFICATION

DESCRIBE VIEW, DIRECTION, ETC. IF DISTRICT, GIVE BUILDING NAME & STREET

Buildings 704 and 705, NCO quarters; view looking north

PHOTO NO.

3 of 5



UNITED STATES DEPARTMENT OF THE INTERIOR
NATIONAL PARK SERVICE

**NATIONAL REGISTER OF HISTORIC PLACES
PROPERTY PHOTOGRAPH FORM**

FOR NPS USE ONLY

RECEIVED

DATE ENTERED

SEE INSTRUCTIONS IN *HOW TO COMPLETE NATIONAL REGISTER FORMS*
TYPE ALL ENTRIES ENCLOSE WITH PHOTOGRAPH

1 NAME

HISTORIC
Fort George Wright Historic District

AND/OR COMMON

2 LOCATION

CITY, TOWN
Spokane

____VICINITY OF

COUNTY
Spokane

STATE
Washington

3 PHOTO REFERENCE

PHOTO CREDIT Jake Thomas

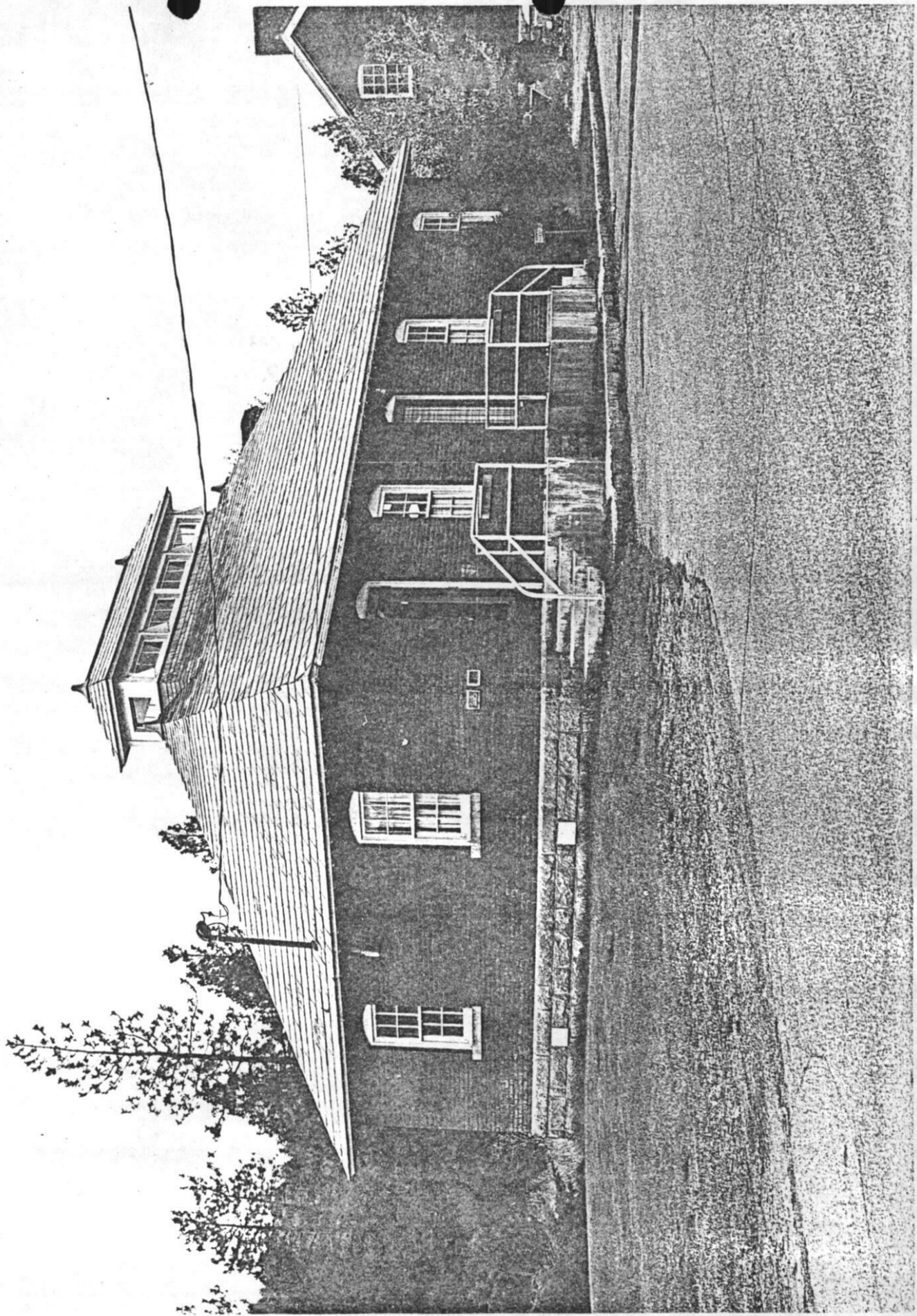
DATE OF PHOTO Sept. 1975

NEGATIVE FILED AT Washington State Parks and Recreation Commission

4 IDENTIFICATION

DESCRIBE VIEW, DIRECTION, ETC. IF DISTRICT, GIVE BUILDING NAME & STREET
Post Bakery

PHOTO NO.
4 of 5



UNITED STATES DEPARTMENT OF THE INTERIOR
NATIONAL PARK SERVICE

**NATIONAL REGISTER OF HISTORIC PLACES
PROPERTY PHOTOGRAPH FORM**

FOR NPS USE ONLY

RECEIVED

DATE ENTERED

SEE INSTRUCTIONS IN *HOW TO COMPLETE NATIONAL REGISTER FORMS*
TYPE ALL ENTRIES ENCLOSE WITH PHOTOGRAPH

1 NAME

HISTORIC

Fort George Wright Historic District

AND/OR COMMON

2 LOCATION

CITY, TOWN

Spokane

____ VICINITY OF

COUNTY

Spokane

STATE

Washington

3 PHOTO REFERENCE

PHOTO CREDIT Jake Thomas

DATE OF PHOTO Sept. 1975

NEGATIVE FILED AT Washington State Parks and Recreation Commission

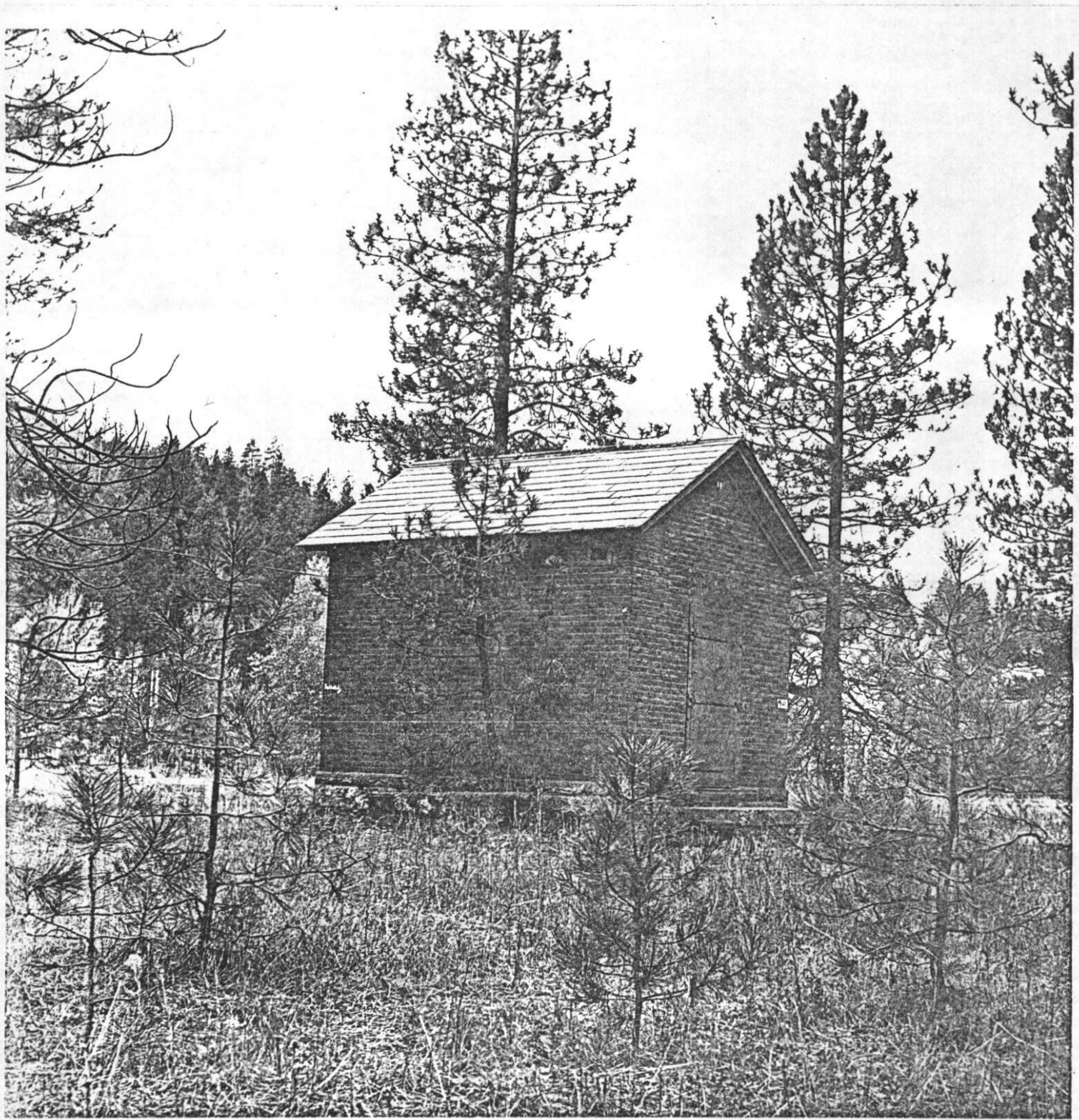
4 IDENTIFICATION

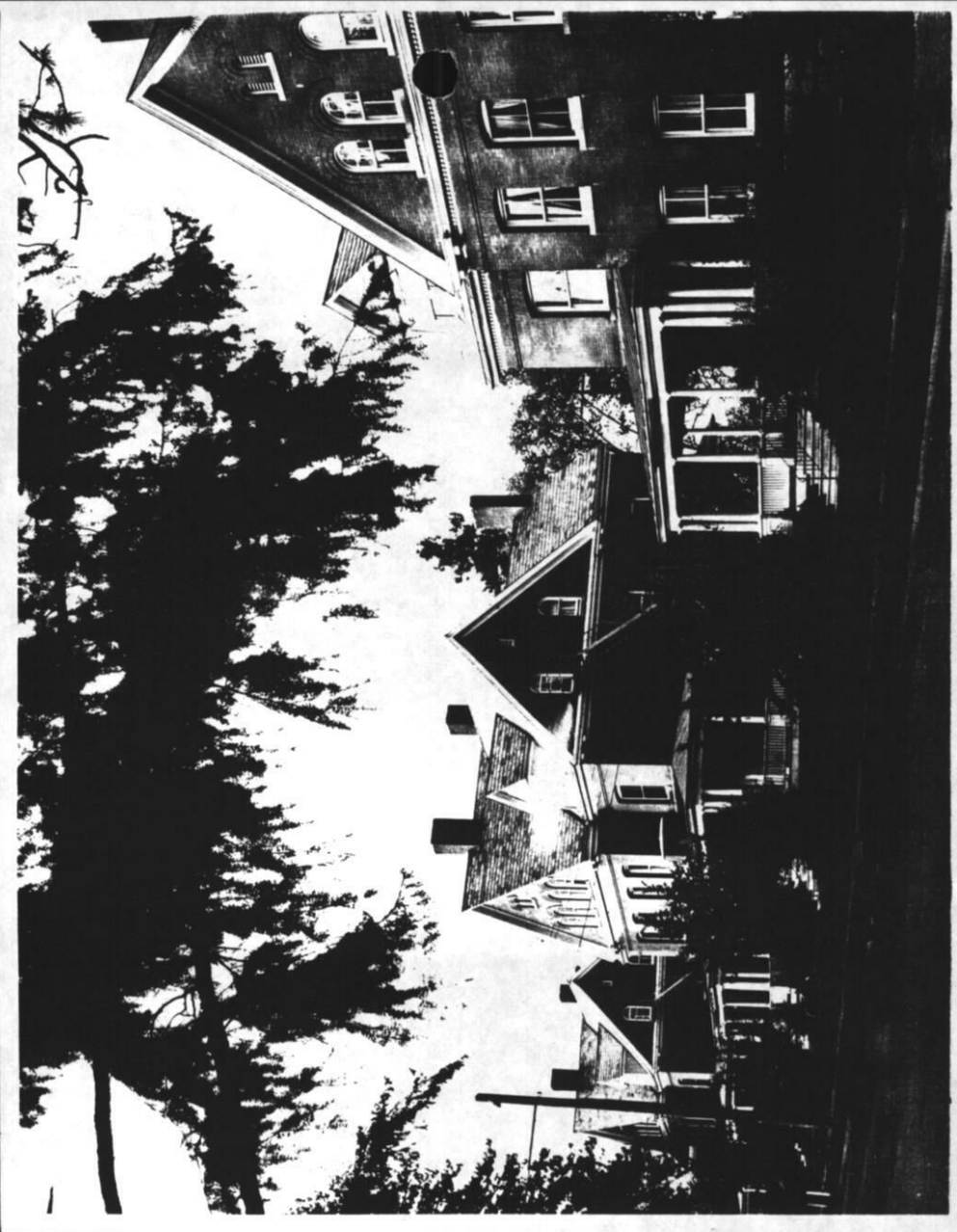
DESCRIBE VIEW, DIRECTION, ETC. IF DISTRICT, GIVE BUILDING NAME & STREET

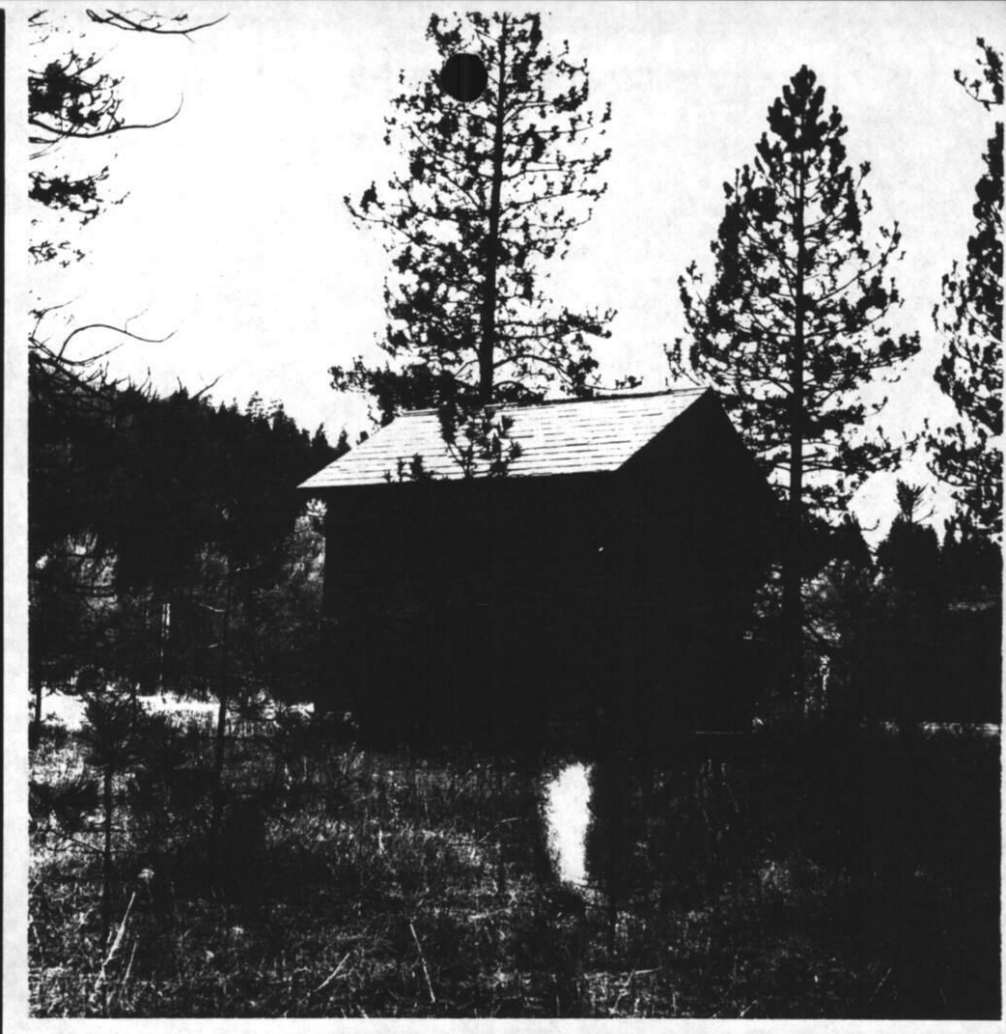
Powder Magazine

PHOTO NO.

5 of 5









Photograph of the Barracks structures
(Building 25)

View of the Guard House (Building 23)





The Post Exchange (Building 100) which we would plan to redecorate on the interior and use as a museum interpreting the history of this area.

Parking area adjacent to the Post Exchange building. A side view of this building giving some indication of its size, can be seen.





A view of the rear of Barracks buildings (Buildings 25 and 27) on left. On the right, in between the trees, are temporary structures (Buildings T 31, 32, 33).

Photograph of the Barracks Building
(Building 27)





This is a view north across the parade ground. The granite marker on the right recognizes Colonel Wright's defeat of the Indians in 1858. In the distance can be seen the Guard House (Building 23), two Barracks structures (Buildings 25 and 27), and the Post Exchange (Building 100).



Roadside marker adjacent to the parade ground seen in the photograph on the next page. "Near this site, September 5, 1858, Colonel George Wright, commanding 9th Infantry, U.S.A., pitched camp after winning the Battle of Spokane Plains, the last fight with Indians in this part of the "Inland Empire."

